



Accredited for compliance with ISO/IEC 17025 – Testing  
NATA is a signatory to the ILAC Mutual Recognition Arrangement for the mutual recognition of the equivalence of testing, medical testing, calibration and inspection reports  
Accreditation No. 2735

## OIL-WET INCLINING PLATFORM SLIP RESISTANCE TEST

### Ozplank Longboards Australian Spotted Gum

**Prepared for:** Flooring Distributors of Australia (FDA)  
Ivan Pannone  
71 Forsyth Street  
O'CONNOR WA 6163

**Specimen Description:** Ozplank Longboards Australian Spotted Gum, 229x1524 mm.

**No. of Specimens:** 2 off

**Surface Structure:** Smooth

**Specimen Preparation:** Washed with water and pH neutral detergent, rinsed then dried.

**Specimen Configuration:** Unfixed

**Test Direction:** Test conducted parallel with embossed finish.

**Joint Type & Width:** N/A

**Air Temperature:** 22°C

**Test Standard:** AS 4586:2013 Slip resistance classification of new pedestrian surface materials, Appendix D - Oil Wet Inclining Platform Test

**Test Shoe:** Leipzig V73-SP

**Test Location:** ATTAR 44-48 Rocco Drive, Scoresby, VIC, 3179

**Test Date:** 23 October 2023

**Test Personnel:** Marcus Braché and Daniel King

<b>Displacement Space</b> (rounded to the nearest 0.5cm <sup>3</sup> /dm <sup>2</sup> ):	Not tested
<b>Displacement Space Assessment Group</b> (Appendix E, AS 4586 - 2013):	Not tested
<b>Corrected mean overall acceptance angle (<math>\alpha_{ave}</math>)</b> (rounded down to the nearest degree):	13°
<b>Classification:</b>	R10

These results apply only to the specimens tested and it is recommended that before selection of flooring or paving materials the effect of service conditions, including maintenance procedures and wear on their slip resistance be checked.

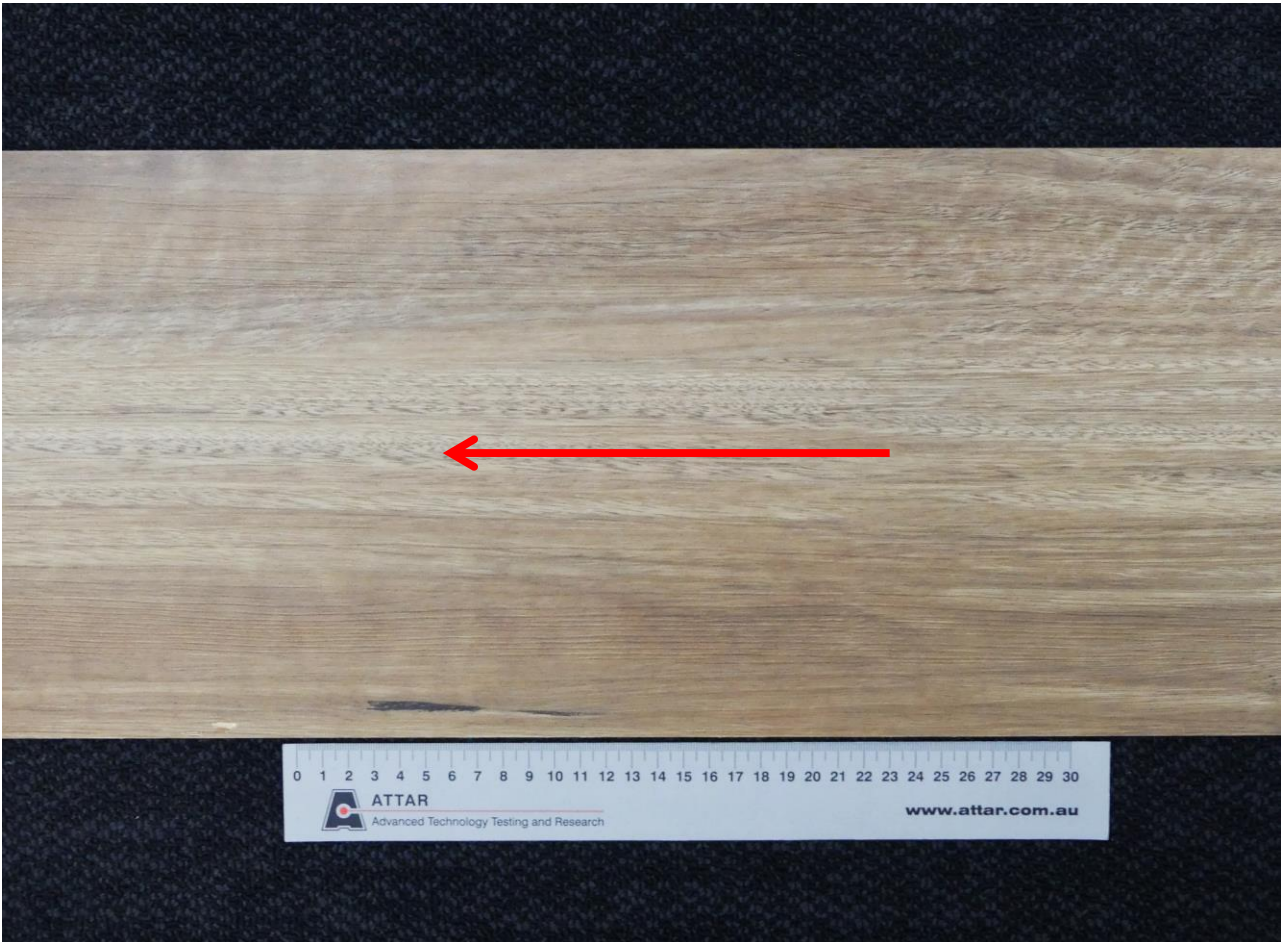
Reviewed By:



Marcus Braché  
Senior Engineering Technician  
Approved Signatory



Daniel King BSc/BEng (mat) Hons., MIEAust  
General Manager - Compliance Services  
Approved Signatory



**Figure 1:** Ozplank Longboards Australian Spotted Gum  
Arrow indicates direction of testing



**CLASSIFICATION CRITERIA – AS 4586 - 2013**  
**Oil Wet Inclining Platform Test – Appendix D**

**Compliance**

**TABLE 5: CLASSIFICATION OF PEDESTRIAN SURFACE MATERIALS ACCORDING TO THE OIL-WET INCLINING PLATFORM TEST**

<b>Classification</b>	<b>Angle, degrees</b>
No Classification	<6
R9	≥6 <10
R10	≥10 <19
R11	≥19 <27
R12	≥27 <35
R13	≥35